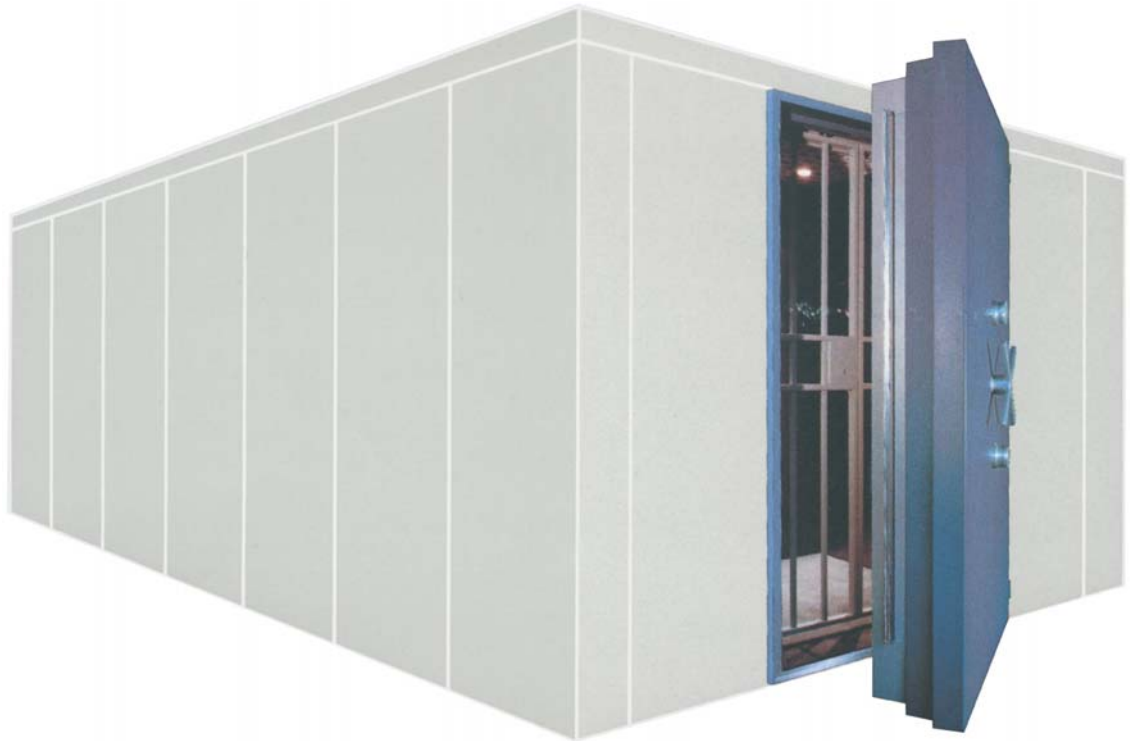




Seit 1872

STACKE

S I C H E R H E I T M I T S Y S T E M



Resistance
grade CEN
VIII - XI (CD)

Euroline strongrooms

The Stacke room-in-room strongroom system in modular design and construction

**VdS tested + certified in accordance with the European standard EN 1143-1.
ECBS Euro certified in accordance with EN 1143-1.**

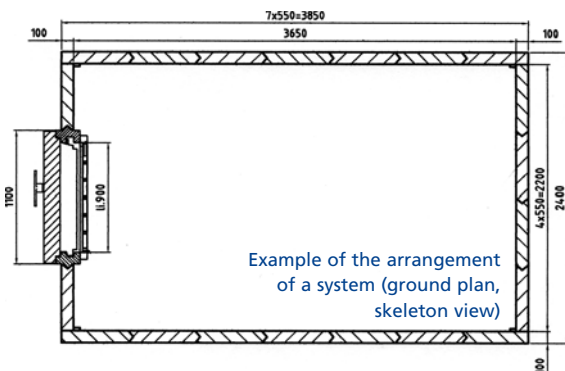
Stacke is a leading manufacturer performing the planning, production and installation of industrially pre-fabricated strongrooms.

Their modular design offers many advantages over the classical strongroom in cast in-situ construction:

- The modular design and construction reduces, e.g., the thickness of a solid 500 mm wall to 150 mm and nevertheless provides the same resistance to burglary.
- The modular design and construction – being compact and, therefore, comparatively light – is a room-in-room system which can be installed in existing rooms by means of dry construction techniques without high technical expenditure even at a later date and can, if necessary, anytime be removed again.
- The compact walls offer the benefit of larger useful space – an advantage for planning – so that such an investment will pay off.
- Strongrooms in modular design are of stable value, in the event of a change of location, they can be disassembled without any problems and reused and reassembled at another place.
- Under specific conditions, a mixed design and construction may be favourable. In this case, e.g. walls consisting of pre-fabricated elements are combined with a floor cast in-situ – or vice versa.
- These strongrooms can be used at any place where valuables need to be protected and locked away. Nowadays, their scope of applications goes far beyond their use in financial institutions and also comprises applications by companies transporting cash and valuables, industrial and business companies, pharmaceutical companies and private persons.
- Stacke is offering a full range of VdS tested resistance grades and thus enables solutions to be tailored to different individual security requirements.
- In every specific project, the local situation and the allowed dimensions are considered in a custom-made individual solution.

Euroline strongrooms

Room-in-room
system in
modular
elements



EL ST 100 VIII

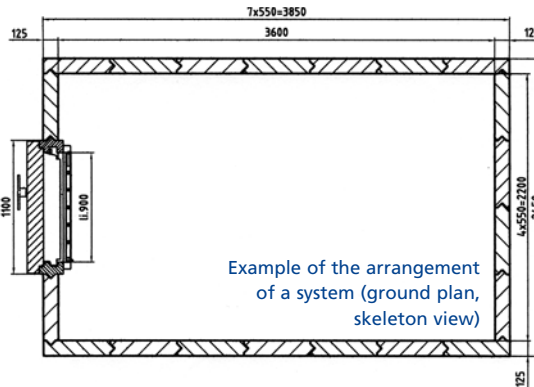
VdS tested + certified in accordance with the European standard EN 1143-1; ECBS Euro certified in accordance with EN 1143-1.

Resistance grade: CEN VIII, 825 RU, 100 mm wall thickness

Weight: approx. 326 kg/m²

Dimensions/elements: 550 mm standard width, special widths and lengths as required

Paint coating: primed only



EL ST 125 (CD) IX

VdS tested + certified in accordance with the European standard EN 1143-1; ECBS Euro certified in accordance with EN 1143-1.

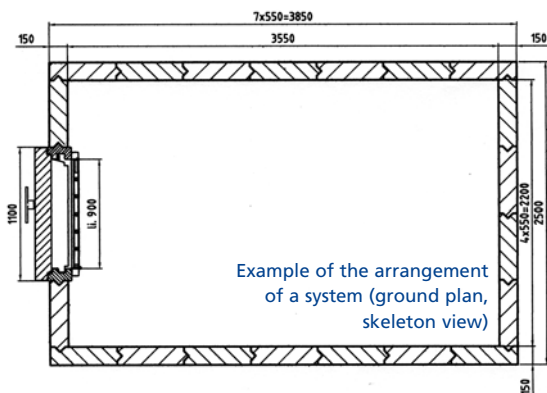
Resistance grade: CEN IX, 1,050 RU, 125 mm wall thickness

Optional: CD protection against 10,000 RU crown bits

Weight: approx. 376 (390) kg/m²

Dimensions/elements: 550 mm standard width, special widths and lengths as required

Paint coating: primed only



EL ST 150 (CD) X

VdS tested + certified in accordance with the European standard EN 1143-1; ECBS Euro certified in accordance with EN 1143-1.

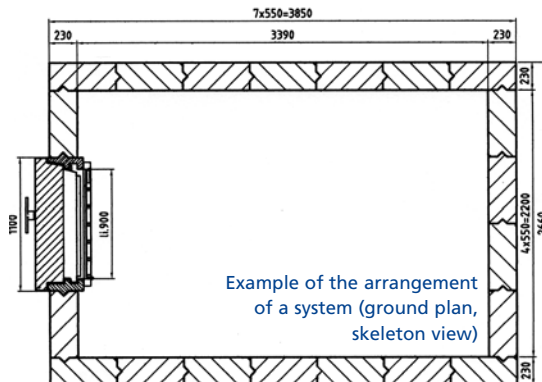
Resistance grade: CEN X, 1,350 RU, 150 mm wall thickness

Optional: CD protection against 10,000 RU crown bits

Weight: approx. 457 (471) kg/m²

Dimensions/elements: 550 mm standard width, special widths and lengths as required

Paint coating: primed only



EL ST 230 (CD) XI

VdS tested + certified in accordance with the European standard EN 1143-1; ECBS Euro certified in accordance with EN 1143-1.

Resistance grade: CEN XI, 2,000 RU, 230 mm wall thickness

Optional: CD protection against 10,000 RU crown bits

Weight: approx. 680 (694) kg/m²

Dimensions/elements: 550 mm standard width, special widths and lengths as required

Paint coating: primed only