

# STACKE Info

BRIEF UP TO DATE INFORMATION ON NEW PRODUCTS

## CASHDROP TS\* STAND-ALONE INWALL

Automated deposit safes  
Resistance grades N II + III  
VdS-tested and certified according to I 143-2  
\* with touch screen

**CASHDROP TS in stand-alone “design”**  
Stand-alone deposit safe in a sophisticated design, self-service via touch screen, safe bag dispenser, withdrawal at “front load”, via lockable door cover (self-closing) and electronic code lock of the main door.

**CASHDROP TS inwall**  
Deposit safe for installation into the wall with stainless steel frame self-service via touch screen, safe bag dispenser, withdrawal at “rear load”, via main door at the rear, with electronic code lock.

**Both systems**  
with wooden table, same colour as the machine, optionally of hardwood.  
Inside: Bulkhead partition with frame and felt mat  
As an option: AVT transport container with automatically closing lid, 2 handles, cap for lead sealing, stackable.



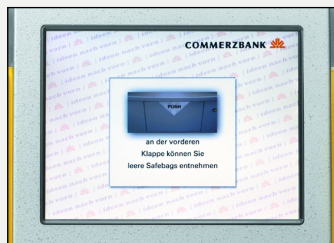
CASHDROP TS of stand-alone “design” – 1. Welcome

### Highlights

- VdS-tested as automated self-service safe – for burglary resistance and protection against manipulation in accordance with EN I 143-2
- Identification with EC or customer card
- Individual operator-specific configuration
- Network-capable through online accessibility
- Operation via touch screen with alpha-numerical keyboard and selection menu listing: Safe bag number, amount, reference. User guidance (see below).
- Online-booking, online-monitoring, advertising video animation



2. Insert card, please



3. You can withdraw a safe bag



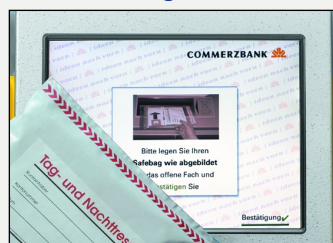
4. Enter safe bag number



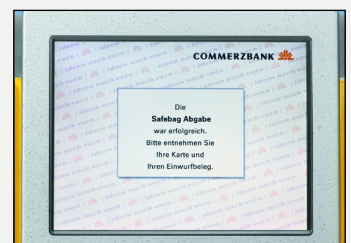
5. Enter amount of cash



6. Enter reference



7. Drop the safe bag



8. Please retrieve card and receipt

# The components of the system

## ■ Safe

Safe as a deposit safe of resistance grade II or III

**stand-alone with "front loading"**

for withdrawal at the front side, via door cover (KL), and main door with electronic code lock (ECL)

**inwall with "rear load"**

for withdrawal at the rear side, via main door, with electronic code lock (ECL).

**Both systems**

with armoured systems-related aperture for dropping, door pivot to DIN on the right,

4-fold anchoring, pre-equipped for (but without) tear-off detector,

pre-equipped for an IAS.

Outside dimensions of the safe:

975 x 650 x 580 (h x w x d)

Inside dimensions:

875 x 550 x 400 (h x w x d)

clear: 506 mm (w), metal fittings + 40 mm at the outside (d)

Volume: approx. 190 l

Capacity: approx. 50 – 60 safe bags

Equipment: Bulkhead wall with guidance and felt mat

As an option: AVT cassette for valuables/transport container

## ■ Terminal

**stand-alone**, designed as free-standing machine, service via pivotal hood

**inwall**, for installation into the wall with stainless steel frame, service via service door, at the rear with lock, non-reflecting illumination of the terminal.

**Both systems**

With drawer made of stainless steel (power operated), touch screen, card reader and printer.

## ■ Dropping mechanism

Drum made of stainless steel (power operated), 2 light barriers monitoring the drum shaft and chute. Deposit arrival in the safe is documented by means of the cash-drop receipt.

## ■ Safe bag dispenser

Comes as standard with the stand-alone and inwall models and is integrated in the system, visual signal indicating "ready for use".

## ■ Table

Table made of MDF-wood varnished in the colour of the safe.

As an option:

Hardwood, Canadian maple or veneered wood at additional cost, as requested

## ■ Control

via PC, energy supply with UPS, in the secured area.

## ■ Software

As of 04.06: C 3.0 TS XP

## ■ As options:

The AVT transport container and cassette for valuables automatically closing at withdrawal (s. detailed description).

The LKA automated empty cassette magazine, capacity: 30 steel cassettes

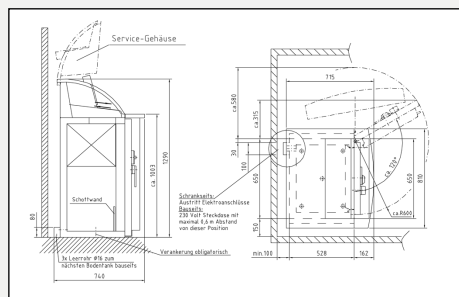
(48 plastic cassettes), dispensing via a clear drawer with bow handle, stopper, sliding plate for noise reduction, additional components in the drive control, further electronic components and cabling, only with inwall models.



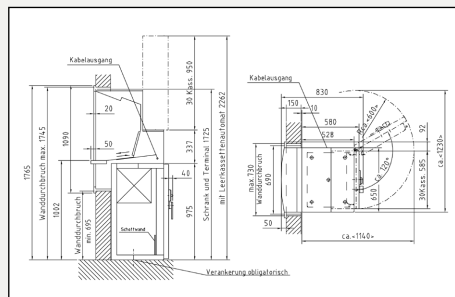
CASHDROP TS inwall

## Technical data

- Power supply: approx. 230 V, 50 Hz
- Power input: approx. 100 VA
- Dimensions: (approx. in mm, h x w x d)
  - stand-alone: 1300 x 810 x 740
  - inwall: 1765 x 770 x 830
- Size of containers:
  - Cassettes max. 197 x 108 x 55 mm
  - Safe bags 240 x 176
- Capacity: approx. 50 - 60 safe bags
- Weight:
  - stand-alone: approx. 580 kg
  - inwall: approx. 620 kg



CASHDROP TS of stand-alone "design" according to A-ELS 200-000-40-3-00



CASHDROP TS inwall, optionally with LKA according to A-ELS 200-000-39-3-00



AVT cassette Container for the transportation of valuables, made of aluminium in light-frame construction.

Outside: 465 x 498 x 390 mm (h x w x d), with lockable lid, varnished, with 2 handles, 2 caps for lead sealing, stackable.

If required, please ask for a larger-scale drawing!